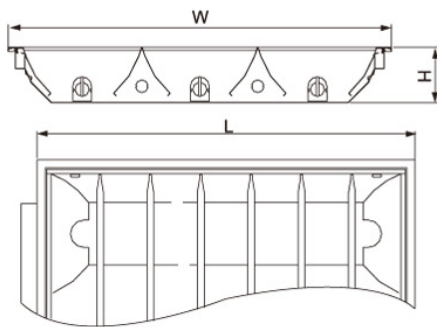
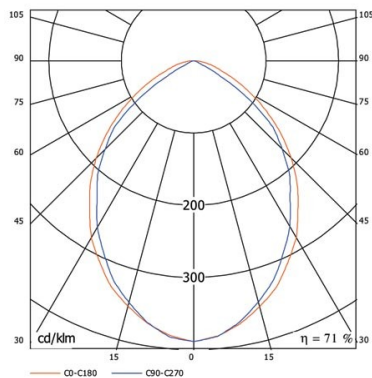


Grille Luminaire B01 Frosted Aluminium Series

PAK's industry leading grille luminaires are made from the finest materials and specially designed to give you the best light distribution effect without unwanted glare.

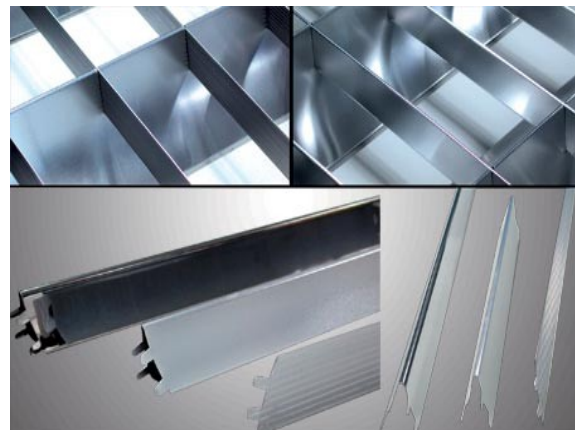
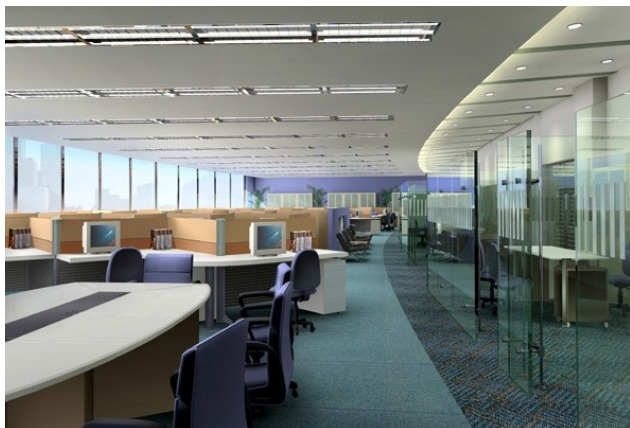


Features

- Housing: cold-rolled steel board, grey film phosphatisation with electrostatic coating
- Reflector: 0.4mm high purity frosted aluminium from Alanod® (Germany)
- Oblique shape base design, adapts to different ceiling structures
- Professionally designed light distribution system for optimum light output
- I-shape or V-shape options for optimum anti-glare
- Installation: recessed

Application

Office, emporium, supermarket, meeting room, business hall, and places where large scale indoor lighting is required



Grille Luminaire

Model(I-shaped)	Model(V-shaped)	Lamp	Ballast	Dimension (mm)
PAK-B01-136-MI		1 x 36W T8	E-ballast(one for one)	1200x200x95
PAK-B01-218-MI		2 x 18W T8	E-ballast(one for two)	600x300x90
PAK-B01-236-MI	PAK-B01-236-MV	2 x 36W T8	E-ballast(one for two)	1200x300x90
PAK-B01-318-MI	PAK-B01-318-MV	3 x 18W T8	E-ballast(one for three)	600x600x90
PAK-B01-336-MI	PAK-B01-336-MV	3 x 36W T8	E-ballast(one for three)	1200x600x90
PAK-B01-218-MI-LA		2 x 18W T8	Magnetic(one for two)	600x300x90
PAK-B01-236-MI-LA	PAK-B01-236-MV-LA	2 x 36W T8	Magnetic (one for one)	1200x300x90
PAK-B01-318-MI-LA	PAK-B01-318-MV-LA	3 x 18W T8	Magnetic(one for two)	600x600x90
PAK-B01-336-MI-LA	PAK-B01-336-MV-LA	3 x 36W T8	Magnetic (one for one)	1200x600x90