

## Post Tops

### PAK G77 Series

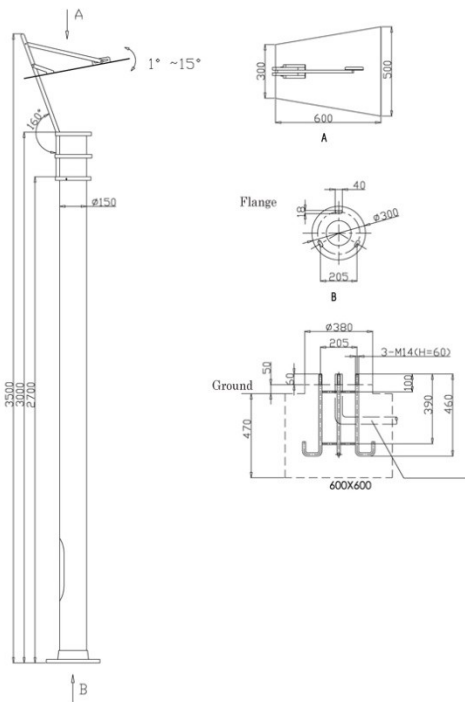


#### Features

- Pole made of 2.5mm thick die-cast aluminium
- Corrosion resistant die-cast aluminium housing
- Polyester powder coated finish
- Glass cover fixture housing
- Stainless steel screws, anti-corrosion
- Built-in PAK electric fittings with power factors > 0.9
- Lamp options: 24W CFL/70W/150W MH
- Protection grade: IP55
- Height: 3.5 m

#### Applications

- Gardens, parks, town centres, amenity, landscape, etc.



Model	Power	Current (A)	PF	Height(m)
PAK-G77-070K-LJ	70W MH	0.38	>0.9	3.5
PAK-G77-150K-LJ	150W MH	0.85	>0.9	3.5